

## class "a" downtown office for lease



## property details

420 w main st ste 306  
boise, id 83702

- located in highly sought after veltex building
- brand new finishes & ready to occupy
- 4 private offices, open office area, & break area
- large windows & lots of light
- located close to courthouse, city hall, and idaho capitol building
- true full-service lease includes janitorial 3x/week

## for lease

size: 1,142sf

rate: \$19.50/sf full service  
(includes janitorial)

contact jay story ccim

p: 208.841.8320

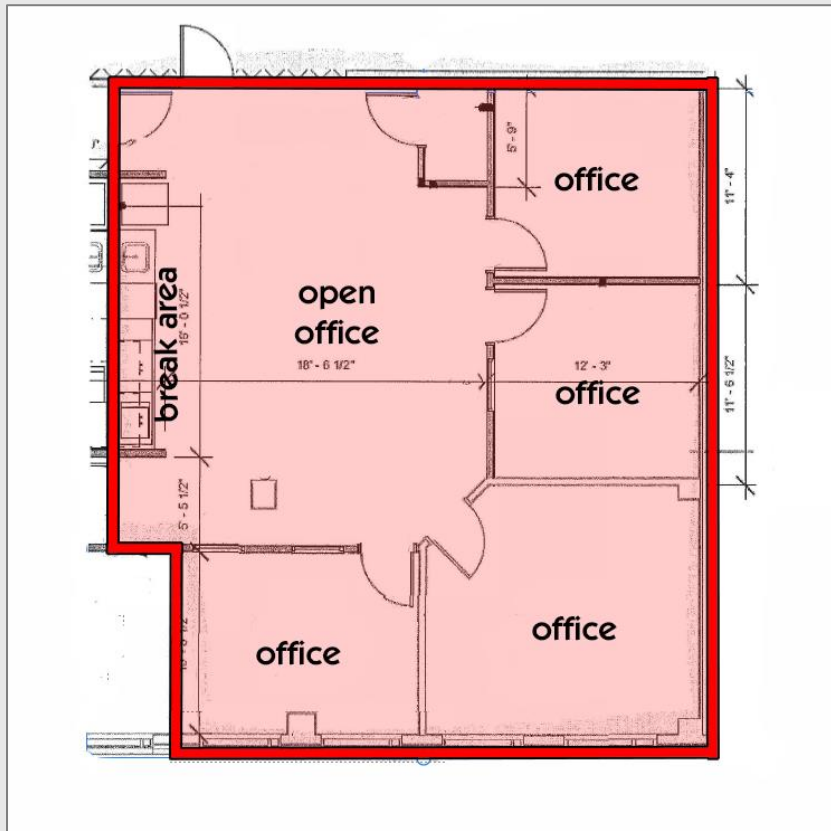
e: story@storycommercial.com

104 s capitol blvd - suite 201, boise, id 83702

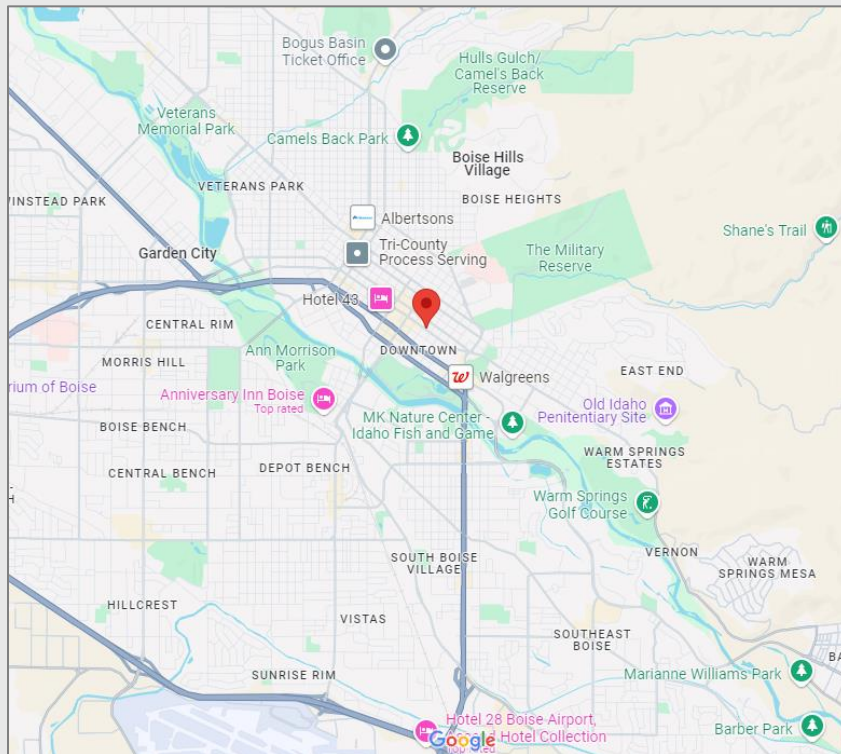
p: 208.841.8320 e: story@storycommercial.com

w: www.storycommercial.com

## floor plan



## vicinity map



## property photos

