

office for lease



property details

417 s 13th st

boise, id 83702

- hard to find smaller office in downtown boise
- off-street parking spaces
- excellent location close at 13th street & myrtle
- office layout great for a number of users: attorney, CPA, counselor, architect, etc.
- size: 1032 sf first floor
- 0.13 acres w/ R-ODD zoning
- built in 1905

for lease

main floor: 1032sf

\$1548/mo

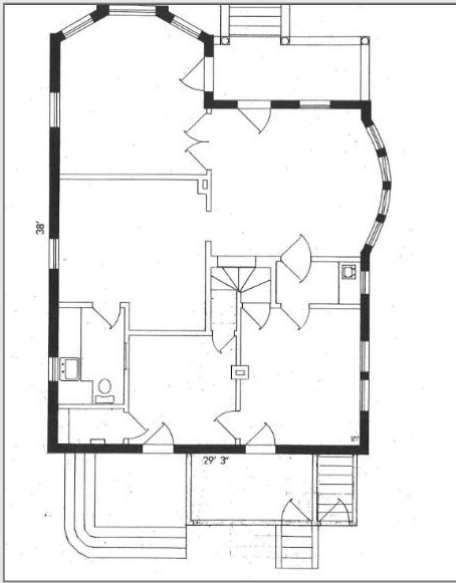
(landlord pays yard maintenance, sewer/trash)

contact jay story ccim

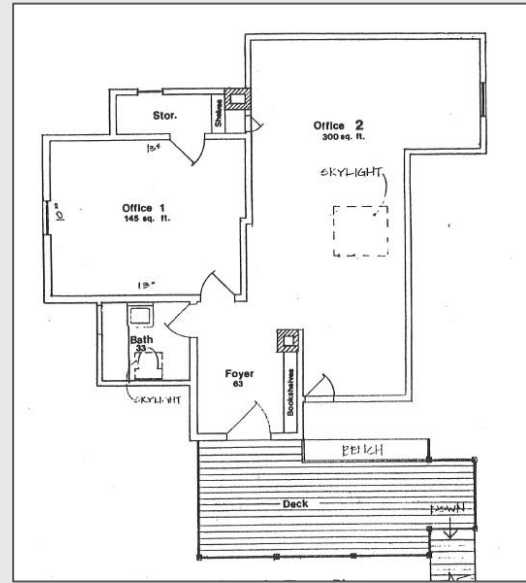
p: 208.841.8320

e: story@storycommercial.com

floor plan



first floor



second floor – not a part

photos

