

prime freeway & overland rd land for lease/build to suit



property details

1940 w overland rd
meridian, id 83642

- highly desirable central location on I-84
- easy access to interstate as it sits b/t two interchanges
- utilities in overland road
- currently zoned RUT
- designated “mixed employment” in the comp plan
- ~5.8 acres on freeway
~3 acres on overland rd
~9.7 acre total (divisible)

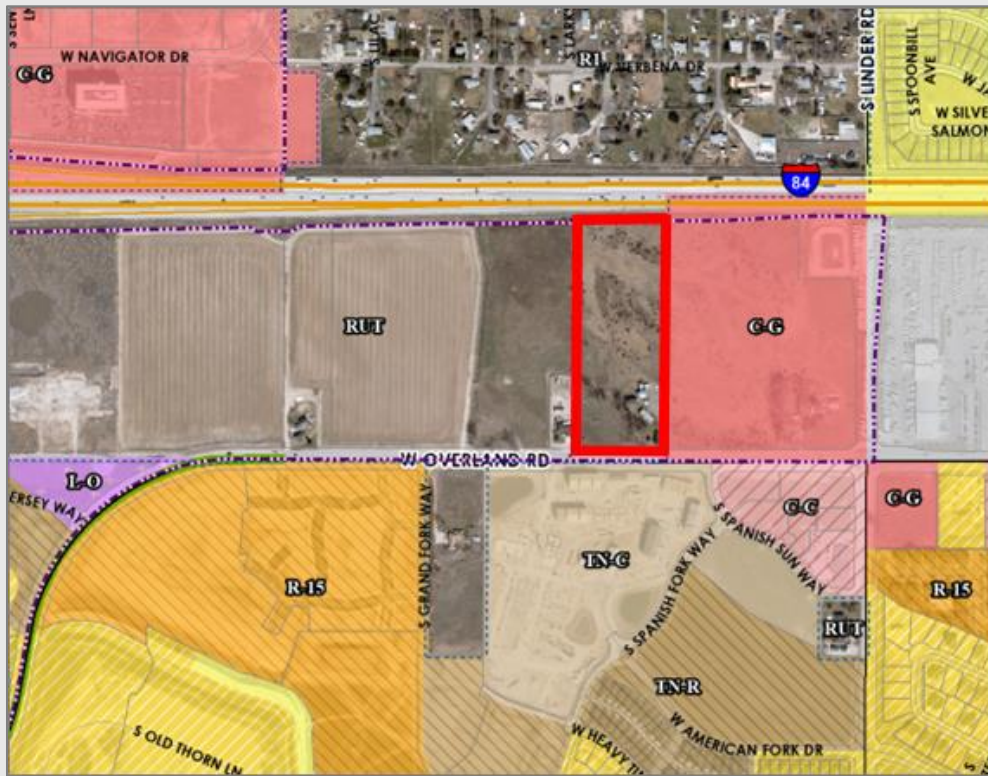
for lease or build to suit

contact jay story ccim

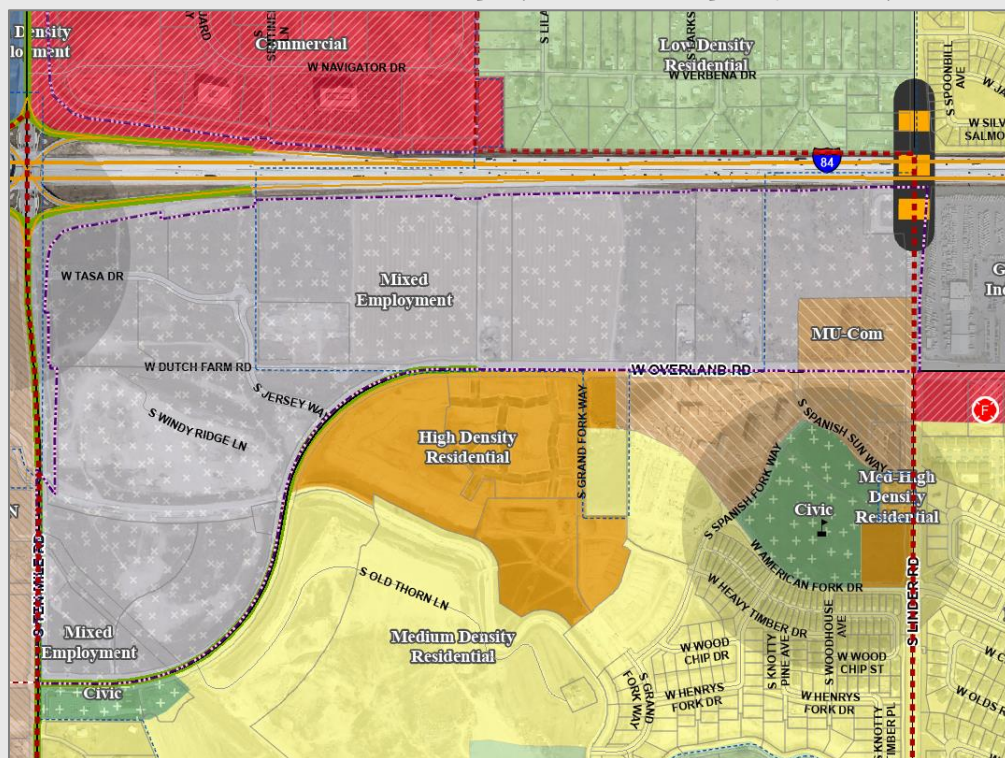
p: 208.841.8320

e: story@storycommercial.com

meridian zoning map (RUT adjacent to C-G)



future land use map (mixed employment)

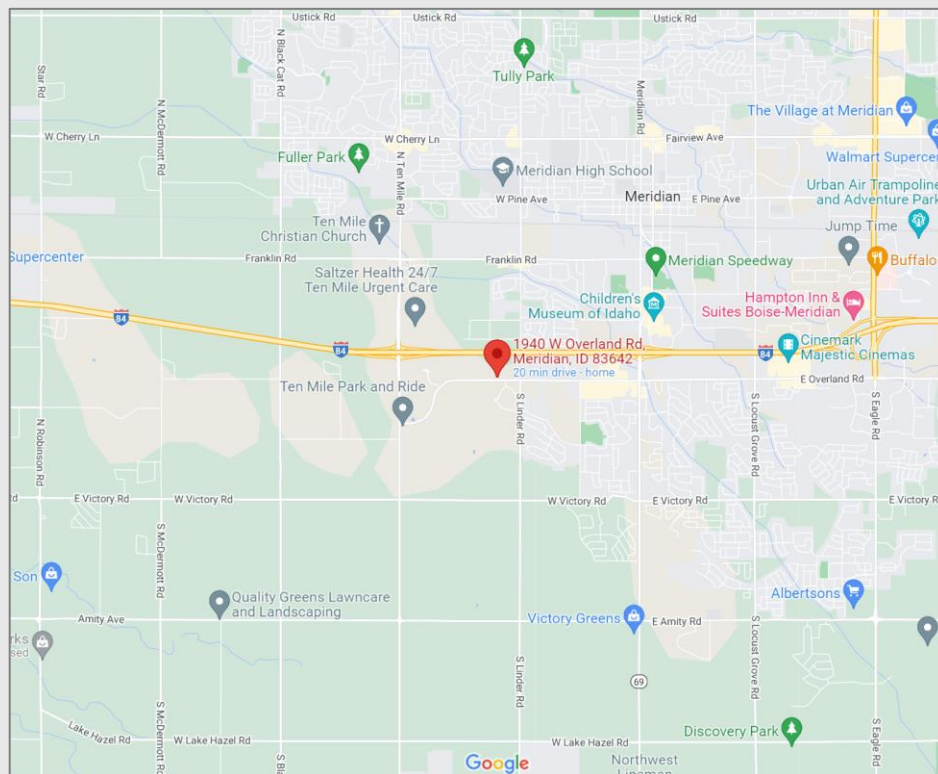


utility map



Sewer and water located in Overland Road. Map provided by City of Meridian 9.20.22

vicintiy map



property photos

